

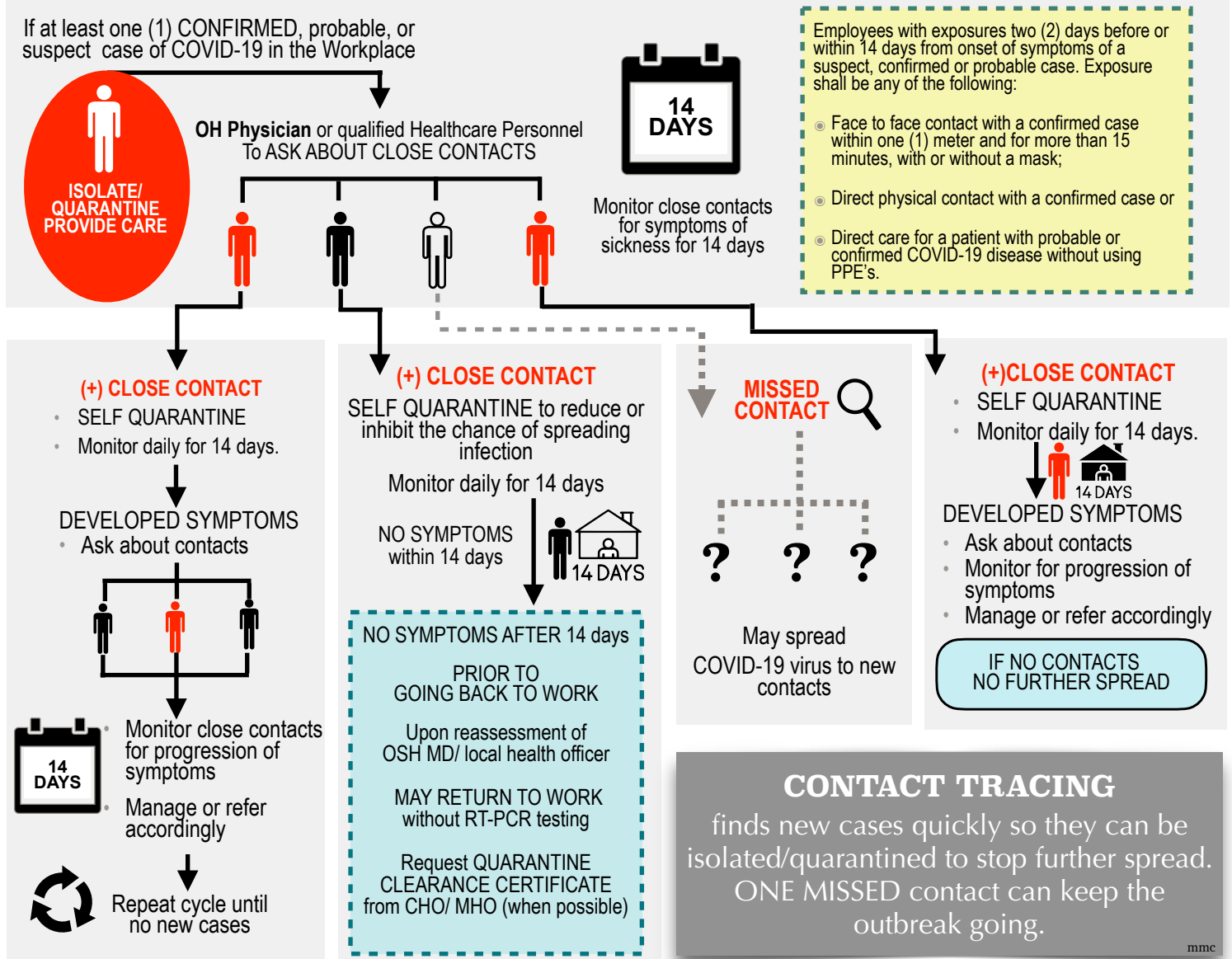


WORKER HEALTH ADVISORY #9

for COVID-19 Disease Prevention

CONTACT TRACING

This is the identification, listing, and follow-up of persons who may have been in close contact with a confirmed COVID-19 case. An important step in containing outbreaks of infectious diseases.



CONTACT TRACING

finds new cases quickly so they can be isolated/quarantined to stop further spread.

ONE MISSED contact can keep the outbreak going.

mmc

Source: JMC No. 20-04-A Series of 2020